

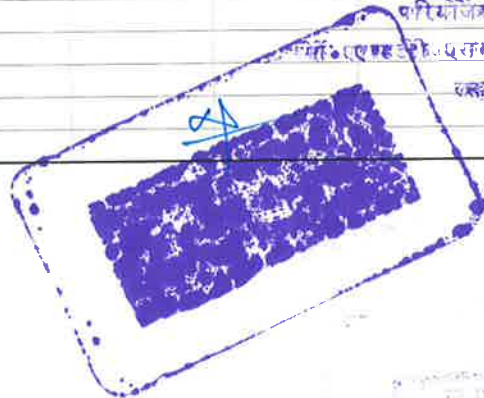
**PROJECT :-DETAILS ESTIMATE FOR THE CONSTRUCTION OF PROPOSED
SLRM (SOLID & LIQUID RESOURCE MANAGEMENT) CENTER**


[COMBINED ABSTRACT OF COST]

S.NO.	DESCRIPTION OF ITEM	QTY	UNIT	RATE	AMOUNT (IN LACS)
1	COST OF SHED WITH VERTICAL SUPPORTS	[As per details attached]			23.10
2	COST OF FENCING WALL	100.00	Rmt	3552.49	3.55
3	COST OF INTER LOCKING PATHWAY	121.50	SQM.	1515.59	1.84
4	COST OF BORING WITH SUBMERSIBLE PUMP	1.00	JOB	109225.00	1.09
5	COST OF TOILET BLOCK	[As per details attached]			2.64
6	COST OF M.S. GATE	1.00	NO.	20420.40	0.20
7	COST OF C.C. ROAD	7.20	Rmt	7354.26	0.53
TOTAL					32.96
8	ADD 2% FOR CONTENGENCIES CHARGES				0.66
9	ADD COST OF EXTERNAL ELECTRIC CONNECTION		L.S.		0.05
G. TOTAL					33.67
SAY RS.				33.67	LAC


[S. R. E.]
CONST. & DESIGN SERVICES
U.P. JALNIGAM
 Resident Engineer (Tech.)
 C. & D. S., U.P. Jal Nigam
 Lucknow


[PROJECT MANAGER]
CONST. & DESIGN SERVICES
U.P. JALNIGAM




 U.P. JALNIGAM
 Lucknow

**PROJECT :-DETAILS ESTIMATE FOR THE CONSTRUCTION OF PROPOSED
SLRM (SOLID & LIQUID RESOURCE MANAGEMENT) CENTER**

ABSTRACT OF COST (SHED)

[Based on SOR-Lucknow wef-03-11-2017 & DSR-2018]

S.N.	DESCRIPTION OF ITEM	SCH. NO.	QUANTITY	UNIT	RATES	AMOUNT
1	Earth work in excavation in trenches for foundations and for pipes cables etc. in ordinary soil(loam clay or sand) including lift upto 1.5 m and dressing of sides and ramming of bottom sand disposal of surplus excavated earth as directed by the Engineer i/c with in a lead of 50m.	[PWD-251]	84.62	CUM	110.00	9308.51
2	Providing and laying in cement concrete 1:4:8 (1 cement :4 coarse sand :8 graded Stone aggregate 40 mm nominal size) and curing complete,including cost of form- work,in foundation and floors.	[PWD-281]	29.954	CUM	5410.00	162050.06
3	Sand filling in plinth under floors including watering, ramming, consolidating and dressing complete including lead up to 50m and lift upto 1.5m and including cost of sand.	[PWD-255+ Local Sand]	25.580	CUM	625.00	15987.50
4	Providing and injecting chemical emulsion for preconstructional antitermite treatment and creating a chemical barrier under and alround the column pits wall trenches basement excavation top surface if plinth filling junction of wall and floor, along the the external perimeter of binding expansion joints, surrounding of pipes and conduits etc, complete (plinth area of the building at ground floor only shall be measured as per I.S.6313(PartII 1981)Alderine emulsifiable concentrate or any other approved material such as Heptrachlor or Chlordane will be used. The rate of application of chemical emulsion shall be as follows : (1)Treatment for masonry & foundation 5 liters per sqm. (2) Back fill in immediate contact with foundation 7.5 liters/sqm (3) Treatment of top surface of plinth filling 5 liters/sqm					
	(4)Treatment junction of wall and the floor 7.5 liters /sqm (5)Treatment of soil along external perimeter of building 7.5 liters/sqm. (6) Treatment of soil under apron along external perimter 5 liters/sqm. (As per manufacturer's standard dilution)	[PAR-2018]	272.700	SQM	210.00	57267.00

5	R.C.C. work with cement approved coarse sand and 20 mm. guage approved stone grit in the proportion of 1:1.5:3 in lintels of doors and windows excluding supply of reinforcement and its fixing and binding the same with 24 BWG binding wire and including necessary centering and shuttering etc.and also including supply of all materials, labour and tools and plants etc, required for proper completion of the works. strength of the concrete shall not beless than M-200.					
	Same as above but for the lighter beams i.e. having spans upto 6 m. (Using 1:1.5:3 Mix concrete)	[PWD-285+ 2.02x 225.00]	10.349	CUM	7854.50	81289.83
6	Same as above but for the Slab i.e. having spans upto 6 m. (Using 1:1.5:3 Mix concrete)	[PWD-284+ 2.02x 225.00]	0.350	CUM	9009.50	3153.33
7	As in item 6 above but in R.C.C. Raft foundation and footing with approved stone ballast.(Using 1:1.5:3 Mix concrete)	[PWD-287+ 2.02x 225.00]	10.980	CUM	6554.50	71968.41
8	As in item 6 above but in Column with approved stone ballast.(Using 1:1.5:3 Mix concrete).	[PWD-289]	5.000	CUM	7950.00	39750.00
9	Class M-150 brick work in 1:6 cement coarse sand (of 2.25 fineness modulus) mortar in foundation & plinth including supply of all materials, labour, tools and plants etc. required for proper completion of the work.	[PWD-303+(305b-305a)]	3.987	CUM	3600.00	14354.33
10	Class-150 brick work in 1:6 cement and Coarse sand mortar in Super structure including supply of all materials, labour tools and plants, etc. required for proper completetion of the work.	[PWD-303+(305b-305a) +309+310]	29.208	CUM	4215.00	123110.46
11	Class-150 HALF brick work in 1:4 cement and COARSE sand mortar in SUPERSTRUCTURE including supply of all materials, labour tools and plants, etc. Required for proper completion of the work.	[PWD- 305b +309+310+310A]	1.733	CUM	4790.00	8299.11

12	P/F Mild steel or iron in plain work such as reinforced concrete or reinforced, brick work (when not included in over all rates) wrought to required shape as necessary including bending for proper completion of the work and including supply of steel its wastage bend hooks and authorised over lapping shall be measured upto floor two level.	[PWD- 504]	24.314	QTL	5400.00	131293.81
13	12 mm cement plaster in single coat on rough side of single or half brick wall for interior plastering up to floor two level including internal rounded angles not exceeding 80 mm in girth and finished even and smooth. (1) 1 cement : 6 fine sand.	[PWD-586]	114.360	SQM	120.00	13723.20
14	15mm Cement plaster in single coat of Rough side of single of half brick wall for exterior plastering upto floor two level including internal rounded angles chamfers, and/or rounded angles not exceeding 80mm. In girth and finished even and smooth No. extra for mixing any additive. 1 cement : 6 fine sand	[PWD-586]	217.410	SQM	120.00	26089.20
15	Cement concrete flooring 1:2:4 (1 cement :2 coarse sand :4 graded stone aggregate 12-20mm nominal size laid in one layer neat cement (40 mm thick floor).	[PWD-605]	249.794	SQM	380.00	94921.76
16	Steel work in built up tubular (round, square or rectangular hollow tubes etc.) trusses etc., including cutting, hoisting, fixing in position and applying a priming coat of approved steel primer, including welding and bolted with special shaped washers etc. complete. Electric resistance or induction butt welded tubes	[DSR-10.16.3-13.33% GST & Labour Cess]	3724.270	KG.	114.16	425147.23
17	Providing corrugated G.S. sheet roofing including vertical / curved surface fixed with polymer coated J or L hooks, bolts and nuts 8mm diameter with bitumen and G.I. limpet washers or with G.I. limpet washers filled with white lead, including a coat of approved steel primer and two coats of approved paint on overlapping of sheets complete (up to any pitch in horizontal/ vertical or curved surfaces), excluding the cost of purlins, rafters and trusses and including cutting to size and shape wherever required. 0.63 mm thick with zinc coating not less than 275 gm/m ²	[DSR-12.1.3-13.31% GST & Labour Cess]	327.870	SQM	807.52	264761.32

18	Providing ridges or hips of width 60 cm overall width plain G.S. sheet fixed with polymer coated J or L hooks, bolts and nuts 8 mm dia G.I. limpet and bitumen washers complete. 0.63 mm thick with zinc coating not less than 275 gm/m ²	(DSR-12.4.2)	27.800	RM	626.73	17423.15
19	Providing and fixing 15 cm wide, 45 cm overall semi-circular plain G.S. sheet gutter with iron brackets 40x3mm size, bolts, nuts and washers etc., including making necessary connections with rain water pipes complete. 0.63 mm thick with zinc coating not less than 275 gm/m ²	[DSR-12.7.2-13.33% GST & Labour Cess]	54.400	RM.	622.80	33880.58
20	Painting two coat over priming coat (but including cost of priming coat) on steel and other metal surfaces up to 10 cm. width or girth or small articles not exceeding 0.10sqm in area white superior synthetic enamel such as LUXOL3,Hi-gloss apcolite superlac, DULUX specified brushing to give an even shade and including cleaning the surface of all dirt,dust and other foreign matter sand papering and stoping including cost of all materials, labour tools and plants etc. required for proper completion of the work. <u>For Steel Surface.</u>	(PWD-641+642)	4263.760	SQM	95.50	407189.08
21	Painting two coat over priming coat (but including cost of priming coat) on steel and other metal surfaces up to 10 cm. width or girth or small articles not exceeding 0.10sqm in area white superior synthetic enamel such as LUXOL3,Hi-gloss apcolite superlac, DULUX specified brushing to give an even shade and including cleaning the surface of all dirt,dust and other foreign matter sand papering and stoping including cost of all materials, labour tools and plants etc. required for proper completion of the work. <u>For Wooden Surface.</u>	(PWD-641+642)	11.340	SQM	95.50	1082.97
22	P/F Mild steel or iron in plain work such as reinforced concrete or reinforced, brick work (when not included in over all rates) wrought to required shape as necessary including bending for proper completion of the work and including supply of steel its wastage bend hooks and authorised over lapping shall be measured upto floor two level.	[PWD- 503]	739.800	KG.	58.50	43278.30

23	Providing and fixing G.I. chain link fabric fencing of required width in mesh size 50x50 mm including strengthening with 2 mm dia wire or nuts, bolts and washers as required complete as per the direction of Engineer-in-charge. Made of G.I. wire of dia 4 mm	[DSR 16.70.1]	119.490	Sqm	703.56	84067.98
24	M.S. or Iron work of small sizes and sections such as holding down bolts, hold fast tie rods, gratings etc. wrought to required from including supply of steel bolts, nuts wastage etc and fixing required for proper completion of the work.	[PWD- 502]				
(a)	Angle iron door chaukhats 40*40*5		49.920	KG	56.00	2795.52
(b)	Z-Section with M.S. Grill		189.000	KG	56.00	10584.00
25	Fixing of Door, windows/ventilators chaukhats in position.					
(a)	Door chaukhats	[PWD-2008]	3.000	NOS	76.80	230.40
(b)	Window chaukhats	[-4% for Vat]	3.000	NOS	67.20	201.60
26	Providing & fixing glass panes with putty and glazing clips in steel doors, windows, clerestory windows, all complete with : 4.0 mm thick glass panes	(DSR-10.30.1/1.1331)	5.400	SQM.	794.77	4291.74
27	Providing and fixing ISI marked flush door shutters conforming to IS :2202 (Part I) non-decorative type, core of block board construction with frame of 1st class hard wood and well matched commercial 3 ply veneering with vertical grains or cross bands and face veneers on both faces of shutters					
(a)	30 mm thick including ISI marked Stainless Steel butt hinges with necessary screws single leaf	[D.S.R.-9.21.2]	5.670	SQM	1606.04	9106.23
28	Providing and fixing aluminium sliding door bolts, ISI marked anodised (anodic coating not less than grade AC 10 as per IS : 1868), transparent or dyed to required colour or shade, with nuts and screws etc. complete : 250x16 mm	(DSR -9.96.2)	3.000	NOS	204.48	613.45
29	Providing and fixing aluminium tower bolts, ISI marked, anodised (anodic coating not less than grade AC 10 as per IS : 1868) transparent or dyed to required colour or shade, with necessary screws etc. complete :					
(a)	250 mm x 10mm	(DSR -9.97.2)	3.000	NOS	91.39	274.16

**PROJECT :-DETAILS ESTIMATE FOR THE CONSTRUCTION OF PROPOSED
SLRM (SOLID & LIQUID RESOURCE MANAGEMENT) CENTER**

DETAILS OF MEASUREMENT (SHED)

S.NO.	DESCRIPTION OF ITEM	NO.	L	B	H	QTY	UNIT
1	Earth work in excavation						
	Under Footings (Including all Deductions)						
	F-1	26	1.500	1.500	1.200	70.200	
	PLINTH BEAM						
	BACK & FRONT	20	1.500	0.330	0.400	3.960	
	BOTH SIDE	6	1.800	0.330	0.400	1.430	
		3	1.700	0.330	0.400	0.670	
	DWARF WALL						
	PARKING SPACE	1	9.000	0.600	0.600	3.240	
	WASHING UNIT	1	9.000	0.600	0.600	3.240	
		2	2.615	0.600	0.600	1.883	
					TOTAL	84.623	CUM
	Filling of earth						
	DEDUCTION OF AVAILABLE EARTH @ 30% OF ITEM NO. 1					-25.387	
	SHED	1	26.540	9.640	0.075	19.190	
					TOTAL	-6.197	CUM
2	Base concrete (1:4:8)						
	UNDER FOOTING						
	F-1	26	1.500	1.500	0.100	5.850	
	PLINTH BEAM						
	BACK & FRONT	20	2.700	0.330	0.100	1.780	
	BOTH SIDE	6	3.000	0.330	0.100	0.590	
		3	2.900	0.330	0.400	1.150	
	DWARF WALL						
	PARKING SPACE	1	9.000	0.600	0.100	0.540	
	WASHING UNIT	1	9.000	0.600	0.100	0.540	
		2	2.615	0.600	0.100	0.314	
	UNDER FLOOR						
	SHED	1	26.540	9.640	0.075	19.190	
					TOTAL	29.954	CUM
3	Sand filling						
	UNDER FLOOR						
	SHED	1	26.540	9.640	0.100	25.580	
					TOTAL	25.580	CUM
4	Anti-termite treatment						
					TOTAL	272.700	SQM
5	R.C.C.work in beams						
	PLINTH BEAM						
	OUTER BEAMS	20	3.000	0.230	0.300	4.140	
	BOTH SIDE	6	3.300	0.330	0.300	1.960	
		3	3.200	0.330	0.300	0.950	
	LESS COLUMN	-26	0.300	0.300	0.300	-0.700	
	BEAM						
	OUTER BEAMS	4	3.000	0.230	0.300	0.830	
	BOTH SIDE	4	3.300	0.330	0.300	1.310	
		2	3.200	0.330	0.300	0.630	
	LESS COLUMN	-8	0.300	0.300	0.300	-0.220	
	TOP LINTEL OF GATE	2	2.700	0.230	0.230	0.286	
	GABLE WALL	4	5.500	0.230	0.230	1.164	
					TOTAL	10.349	CUM

6	R.C.C.work in Slab						
	PROJECTION	3	1.960	0.600	0.100	0.350	
					TOTAL	0.350	CUM
7	R.C.C.work in raft foundation						
	F1	26	1.350	1.350	0.150	7.110	
		26	0.991		0.150	3.870	
					TOTAL	10.980	CUM
8	R.C.C.work in Column						
	UPTO PLINTH LVL.						
	C1 IN F1	26	0.300	0.300	1.100	2.570	
	ABOVE PLINTH						
	C1	8	0.300	0.300	3.000	2.160	
	C1 (FOR GABLE WALL)	4	0.300	0.300	0.750	0.270	
					TOTAL	5.000	CUM
9	B/W In foundation						
	ENT STEPS	2	2.400	0.600	0.150	0.432	
		2	2.400	0.300	0.150	0.216	
	DWARF WALL						
	PARKING SPACE	1	9.000	0.460	0.100	0.414	
		1	9.000	0.345	0.150	0.466	
		1	9.000	0.230	0.200	0.414	
	WASHING UNIT	1	9.000	0.460	0.100	0.414	
		1	9.000	0.345	0.150	0.466	
		1	9.000	0.230	0.200	0.414	
		2	2.615	0.460	0.100	0.241	
		2	2.615	0.345	0.150	0.271	
		2	2.615	0.230	0.200	0.241	
					TOTAL	3.987	CUM
10	B/W In Superstructure (230 mm thick) IN 1:6						
	OFFICE/DINING/TOOLS	2	8.900	0.230	2.700	11.054	
		2	3.140	0.230	2.700	3.900	
	BACK WALL	1	18.900	0.230	0.900	3.912	
	RIGHT SIDE WALL	1	8.900	0.230	0.900	1.842	
	RESOURCE SEGREGATION UNIT	2	2.700	0.230	0.900	1.118	
	M.S. GATE SIDE WALL	4	0.230	0.230	2.100	0.444	
	PARKING SPACE	2	2.430	0.230	0.900	1.006	
	RECYCLABLE FRONT	2	2.700	0.230	0.900	1.118	
	PARKING SPACE	1	8.100	0.230	0.900	1.677	
	WASHING UNIT	1	6.230	0.230	0.900	1.290	
		2	2.430	0.230	0.900	1.006	
	GABLE WALL	4	4.450	0.230	0.550	2.252	
	GABLE WALL (ROOMS)	2	2.770	0.230	0.550	0.701	
	DEDUCTION [-]						
	DOOR	-2	0.900	0.230	2.100	-0.869	
	WINDOWS	-3	1.500	0.230	1.200	-1.242	
					G.TOTAL	29.208	CUM
11	B/W In Superstructure (115 mm thick) IN 1:4						
	OFFICE/DINING/TOOLS	2	3.140	0.115	2.700	1.950	
	DOOR	-1	0.900	0.115	2.100	-0.217	
					G.TOTAL	1.733	CUM
12	M. S. work in R.C.C.						

	qty same as item no (6)*1.25*0.785	(Plinth Beam)				10.155	
	qty same as item no (7)*1.0*0.785	(Slab)				0.275	
	qty same as item no (8)*0.7*0.785	(Foundation)				6.034	
	qty same as item no (9)*2.0*0.785	(Column)				7.850	
					TOTAL	24.314	QTL
13	12 mm Thick plaster (FAIR SIDE)						
	OFFICE/DINING/TOOLS	2	10.100		3.000	60.600	
		2	3.140		3.000	18.840	
	M.S. GATE SIDE WALL	12	0.230		2.100	5.800	
	OFFICE/DINING/TOOLS	2	3.140		3.000	18.840	
	GABLE WALL	4	4.450		1.100	19.580	
	GABLE WALL (ROOMS)	2	2.770		1.100	6.090	
	DEDUCTION [-]						
	DOOR	-2	0.900		2.100	-3.780	
	INTERNAL GATE	-2	2.400		0.900	-4.320	
	DOOR	-1	0.900		2.100	-1.890	
	WINDOWS	-3	1.500		1.200	-5.400	
					TOTAL	114.360	SQM
14	15 mm Thick plaster (ROUGH SIDE)						
	OFFICE/DINING/TOOLS	2	10.100		3.000	60.600	
		2	3.140		3.000	18.840	
	BACK WALL	1	18.900		2.030	38.370	
	RIGHT SIDE WALL	1	8.900		2.030	18.070	
	RESOURCE SEGREGATION UNIT	2	2.700		2.030	10.960	
	M.S. GATE SIDE WALL	4	0.230		2.100	1.930	
	PARKING SPACE	2	2.430		2.030	9.870	
	RECYCLABLE FRONT	2	2.700		2.030	10.960	
	PARKING SPACE	1	8.100		2.030	16.440	
	WASHING UNIT	1	6.230		2.030	12.650	
		2	2.430		2.030	9.870	
	OFFICE/DINING/TOOLS	2	3.140		3.000	18.840	
	DEDUCTION [-]						
	DOOR	-2	0.900		2.100	-3.780	
	INTERNAL GATE	-2	2.400		0.900	-4.320	
	DOOR	-1	0.900		2.100	-1.890	
					TOTAL	217.410	SQM
15	40 MM Thick C.C. Flooring						
	TOOLS ROOM	1	2.770	3.070		8.504	
		1	1.000	0.230		0.230	
	DINING AREA	1	2.770	3.200		8.864	
		1	0.900	0.115		0.104	
	OFFICE	1	2.770	3.070		8.504	
		1	1.000	0.230		0.230	
		1	23.170	9.640		223.359	
					TOTAL	249.794	SQM
16	M.S. Work in Truss						
	PURLIN (65NB) (3.0 mm thick)	10	22.700		4.587	1041.250	
	BOTTOM TIE (65 NB) (3.0 mm thick)	3	22.700		4.587	312.370	
	TRUSS T1 (8 NOS.)						
	TOP RAFTER (65 NB) (3.0 mm thick)	16	5.324		4.587	390.740	
	BOTTOM RUNNER (50 NB) (3.0 mm thick)	8	9.800		3.477	272.600	
	VERTICAL MEMBERS						
	32 NB (3.0 mm thick)	16	0.375		2.146	12.880	
	32 NB (3.0 mm thick)	16	1.050		2.146	36.050	

	32 NB (3.0 mm thick)	8	1.380		2.146	23.690	
	INCLINED MEMBERS						
	32 NB (3.0 mm thick)	16	1.225		2.146	42.060	
	40 NB (3.0 mm thick)	16	2.450		2.737	107.290	
	32 NB (3.0 mm thick)	16	1.225		2.146	42.060	
	BASE PLATES						
	BASE PLATES 12.0mm (P1 & P2)	16	0.230	0.230	94.200	79.730	
					TOTAL	2360.720	KG
	ADD 15% FOR CLEAT ANGLE, GUSSET PLATE,						
	BOLTS, NUTS ETC.					354.110	
	FOR VERTICAL SUPPORT	18	3.20	14.40		829.440	
	FOR BASE PLATES	18		10.00		180.000	
					TOTAL	3724.270	KG
17	Galvanized Steel Sheet Roofing	2	27.800	5.800		322.480	
	FOR SIDE SHEETING (TRIANGULAR AREA)	2	2.450	1.100		5.390	
					TOTAL	327.870	SQM
18	G.I. ridges	1	27.800			27.800	
					TOTAL	27.800	RM
19	G.I. sheet gutter	2	27.200			54.400	
						54.400	RM.
20	Painting of M.S. Pipes						
	65MM DIA PIPE	10	22.800	7.900	1.500	2701.800	
	40MM DIA PIPE	10	14.200	3.600	1.500	766.800	
	GATE	2	2.400	2.100	2.000	20.160	
	25x25x2.6 mm SQUARE PIPE	30	2.700	4.000	1.000	324.000	
	25x25x2.6 mm SQUARE PIPE	30	1.800	4.000	1.000	216.000	
		4	3.000	4.000	1.000	48.000	
		2	2.900	4.000	1.000	23.200	
		6	1.800	4.000	1.000	43.200	
	FOR VERTICAL SUPPORT	18	3.20		2.000	115.200	
	WINDOWS	3	1.500	1.200	1.000	5.400	
					TOTAL	4263.760	SQM
21	Painting on wood						
	D	3	0.900	2.100	2.000	11.340	
					TOTAL	11.340	SQM
22	M.S. work in Gate						
	GATE	2	2.400	2.100	35.000	352.800	
	M.S. Works for Chain Link Fencing						
	25x25x2.6 mm SQUARE PIPE	32	2.700		1.690	146.020	
		4	3.000		1.690	20.280	
		2	2.900		1.690	9.800	
		19	2.700		1.690	86.700	
	Clamps for fixing Chain link fence to M.S. pipe	18	3.000		2.300	124.200	
					TOTAL	739.800	KG.
23	P/F G.I. Wire in Chain Link Fencing						
	Aperture 50x50mm	1	48.000		2.100	100.800	
		1	8.900		2.100	18.690	
					TOTAL	119.490	Sqm
24	M.S. Work in D/W						
(a)	Angle Iron door Chaukhats (35X35X5 mm)						

	D	3	5.200		2.600	40.560	
(b)	For Hold Fast	18	0.200		2.600	9.360	
					TOTAL	49.920	KG
(c)	Z-Section with M.S. Grill						
	WINDOWS	3	1.500	1.200	35.000	189.000	
					TOTAL	189.000	KG
25	Fixing D/W/V Chaukhats.						
	Door Chaukhats					3.000	NOS.
	Window Chaukhats					3.000	NOS.
26	Glass panes						
	WINDOWS	3	1.500	1.200		5.400	
					TOTAL	5.400	SQM
27	30mm thick Flush doors						
	D	3	0.900		2.100	5.670	
					TOTAL	5.670	SQM
28	Sliding bolt.						
	250 x 16mm				TOTAL	3.000	NOS
29	Tower bolt						
	(a) 250 x 10mm				TOTAL	3.000	NOS
30	Handle (125mm)						
	(a) 125mm				TOTAL	6.000	NOS
31	Finish Wall with Water proof cement paint						
	[Same as Plaster Area]					331.770	
					TOTAL	331.770	SQM.
32	Rain water pipe	1	6.000		3.500	21.000	
					TOTAL	21.000	RM.

Spill
Resident Engineer (Tech.)
C. & D. S., U.P. Jal Nigam
Lucknow

PROJECT - SHED

Sl.No.	DESCRIPTION	SI No.	QTY.	UNIT	RATE	AMOUNT
SCHEDULE ITEM (A)						
1	Wiring points for light with 1.5 sqmm.FRLSH PVC insulated single core aluminium conductor cable in PVC conduit pipe partly concealed in wall and partly laid in slab along with the reinforcement before concreting, complete with 1.5 sqmm.FRLSH PVC insulated multistrand copper conductor cable as earth continuity wire and piano type switch etc. complete in all respects.	138©	11	Each	610.00	6710.00
2	Same as item No. (1) but for fan and light duty exhaust fan.	140©	7	Each	671.00	4697.00
3	Same as item No.(1) but for 5 amp plug point with piano type switch and socket etc.	141©	1	Each	327.00	327.00
4	Supply & fixing of industrial bulk head fitting of cast aluminium body, having heat resistant glass cover and M.S. galvanized wire guard suitable for and with 9/10 watt CFL complete in all respect.	448-2016	8	Each	821.00	6568.00
5	Supply & fixing of LED Tube Light with batten suitable for up to 1 x 22 watt LED tube light complete including tube etc on surface complete in all respects.(CAT: AA)	1413	3	Each	1020.00	3060.00
6	Supply and burying of 40mm dia x 4.5meters long G.I. pipe, vertically for earthing having 12 mm dia. Holes spaced 75mm apart drilled upto 2 meters from the bottom complete with earthing lead of no 6 to 8 SWG GI wire in GI pipe upto apron (and from apron to switch board the cost of G.I. pipe and G.I. wire will be extra) upto switch board, 30cm square G.I. box with hinged cover, masonry enclosure, funnel at top, alternate layers/of charcoal/ coke and salt at least 150mm thick alround etc. complete in all respects.	701	1	Each	4076.00	4076.00
7	Supply & fixing of one number 8 SWG G.I. wire in 15mm dia. G.I. pipe for earthing, laid in wall duly concealed including the cost of cement, sand, labour, T&P other material required for proper completion of the work as directed at site	721	15	Metre	200.00	3000.00
8	Supply and fixing of 240 volts 'L' series miniature circuit breaker 9 K.A / 10 K.A.in existing MCB, DB complete with connections as required.	1002	2	Each	206.00	412.00
a)	5 - 32 amps.					
9	Supply and fixing of flush/surface mounting distribution boards complete in all respects.	1024(A)	1	Each	1575.00	1575.00
a)	8Way SPN					
10	Erection and testing of ceiling fan and regulator for room height upto 3.5mts. including supply of 3mm thick G.I. Pipe 19mm dia duly painted, complete in all respects.	1116	5	Each	140.00	700.00
TOTAL OF SCHEDULE ITEM (A)						31125.00
NON - SCHEDULED ITEMS (B)						
(AS PER MARKET RATES)						

8	Providing and Laying unplasticized rigid PVC pipe conforming to IS:13592 type A including jointing , cutting and making good the walls & floors as per requirement.					
a)	150mm	NS	85	Metre	600.00	51000.00
9	Supply and erection of AC 1200mm Sweep, 220/240 Volts, 50 Hz ceilling fan with regulator standar down rod, blades including connection etc. complete as required	1501	5	each	1800.00	9000.00
TOTAL OF NON - SCHEDULED ITEMS (B)						60000.00
TOTAL OF SCHEDULE ITEM (A)						31125.00
GRAND TOTAL (A)+(B)						91125.00

Siddh
Resident Engineer (Tech.)
C. & D. S., U.P. Jal Nigam
Lucknow

Detail estimate for construction of Fencing Wall										
S.NO.	S.O.R	DESCRIPTION	NOS	LENTH	WIDTH	Height/D EPH	QTY	RATE (Rs)	UNIT	AMOUNT (Rs.)
1	SOR PWD 251	Excavation for all types and sizes of foundations, trenches and drains of for any other purpose including disposal of excavated stuff up to 1.5m lift and lead up to 50m (At least 5m away from the excavated area), including dressing and leaving of pits.								
		In all types of soil.	1	100.00	0.40	0.475	19.00			
						Total	19.00	cum	110.00	2090.00
2	SOR PWD 280	Providing and laying nominal mix cement concrete with crushed stone aggregate using concrete mixer in foundation, plinth and at ground level excluding cost of form work.								
		1:4:8 (1 cement:4 coarse sand:8 graded stone aggregate 40mm nominal size)	1	100.00	0.40	0.10	4.00			
						Total	4.00	cum	5410.00	21640.00
3	SOR PWD 303+305b- 305a	Class M-150 brick work in 1:6 cement coarse sand (of 2.25 fineness modulus) mortar in foundation & plinth including supply of all materials, labour, tools and plants, etc. required for proper completion of the work.								
		For wall Fondation	1	100.00	0.345	0.225	7.76			
			1	100.00	0.230	0.150	3.45			
		Above ground level	1	100.00	0.230	0.750	17.25			
		Less PCC for hold post	-33	0.20	0.230	0.600	-0.91			
						Total	27.55	cum	3600.00	99180.00
4	DSR 16.70.1- 13.33%	Providing and fixing in position chain linked steel wire fabric made of 4mm dia G.I wire of required width in mesh to concrete/wooden/angle iron posts including securing and screwing with 2mm dia G.I wire, G.I staples, G.I.U-nails or steel Pins etc. Complete								
		Aperture 50×50mm	1	100.00		1.70	170.00			
						Total	170.00	sqm	703.56	119604.62
5	SOR PWD 502	Providing and placing in position angle iron post and strut of required size including bottom to be split and bent at right angle in opposite direction for required length and drilling holes upto 10mm dia, as per requirement including priming coat with red oxide zinc chromate primer and placing the post/strut in cement concrete block.								
		For Vertical Post (Angle 40×40×5)	33	2.30		3.80	288.42			
		For Inclined Support	17	3.45		3.80	222.87			
		Angle for Top and Bottom	2	100.00		3.80	760.00			
						Total	1271.29	Kg	56.00	71192.24

6	SOR PWD 283	Providing and laying nominal mix plain cement concrete with crushed stone aggregate using concrete mixer in all works								
		1:2:4 (1 cement:2 coarse sand 4graded stone aggregate 20mm nominal size)								
		For Inclined Support	33	0.20	0.20	0.60	0.79			
						Total	0.79	cum	7250.00	5727.50
8	SOR PWD 586	12mm thick cement plaster of mix:								
		In cement Mortar 1:6 (1 cement :6 fine sand)								
		At Inside wall	1	100.00		0.85	85.00			
		For Top of wall	1	100.00		0.20	20.00			
						Total	105.00	sqm	120.00	12600.00
9	SOR PWD 586	12mm thick cement plaster of mix: In Cement mortar 1:6 (1 cement:6 fine sand)								
			1	100.00		0.85	85.00			
						Total	85.00	sqm	120.00	10200.00
10	SOR PWD 660+661	Finishing walls with water proofing cement paint of required shade to give an even shade.								
		On New work (Two or more coats applied@3.84kg/10sqm)								
		Qty as per plaster area				Total	190.00	sqm	68.50	13015.00
						Cost of 100.00 Rmt			G.Total	355249.36
						Cost of 1.00 Rmt				3552.49

Fricks
 Resident Engineer (Tech.)
 C. & D. S., U.P. Jal Nigam
 Lucknow

[illegible]

Shisho
Resident Engineer (Tech.)
C. & D. S., U.P. Jal Nigam
Lucknow

DETAILED ESTIMATE OF BORING AND PUMP

Sr.No.	Description	Qty	Unit	Rate	Amount
A	External W/S arrangement, T.W. boring of 150mm dia with 100mm dia P.V.C. pipe assembly, 1.5 H.P. submersible pump including supply of all accessories starter, panel etc. & pipe arrangement etc.				
1	100mm dia PVC pipe of ISI mark [14 Kg pressure]	60	RM	550.00	33000.00
2	P/F 2" PVC pipe	40	RM	400.00	16000.00
3	NYLON mesh for filter	1	Roll	500.00	500.00
4	Plastic dori	1	Gulla	150.00	150.00
5	Solvent dori	1	L.t	250.00	250.00
6	4" End cap	1	NO.	250.00	250.00
7	4" Submersible Cap	1	No.	225.00	225.00
8	2" MS clamp (Heavy)	1	Pair	500.00	500.00
9	2" GI elbow.	1	No.	110.00	110.00
10	2"*6" GI nipple	1	NO.	140.00	140.00
11	1.5 HP 9 Stage Submersible Pump of ISI mark With automatic panel.	1	NO.	20000.00	20000.00
12	2.5 Sqm. Submersible cable.	60	mt.	250.00	15000.00
13	Drilling Charges for 6" dia tubewell.	60	mt.	275.00	16500.00
14	Pea Gravel	1	Cm.	3000.00	3000.00
15	2" Ms Socket.	4	No.	150.00	600.00
16	Cartage of material upto site.	L.s		3000.00	3000.00
				Total	109225.00
				SAY RS.	1.09 LACS

8/10/20
Resident Engineer (Tech.)
C. & D. S., U.P. Jal Nigam
Lucknow

PROJECT -: DETAILED ESTIMATE OF PROPOSED SLRM CENTRE

COMBINED ABSTRACT OF COST OF Toilet Block

S.N.	DESCRIPTION OF ITEM	AMOUNT (IN LACS)
1	COST OF TOILET BLOCK	
(a)	COST OF CIVIL WORKS (AS PER DETAILS ATTACHED)	1.43
(b)	COST FOR INTERNAL W/S AND SANITATION (AS PER DETAILS ATTACHED)	0.69
(c)	COST FOR SOAK PIT (AS PER DETAILS ATTACHED)	0.45
(d)	COST FOR INTERNAL ELECTRIFICATION (AS PER DETAILS ATTACHED)	0.08
	TOTAL	2.64
	SAY RS.	2.64 LAC

Sd/-
Resident Engineer (Tech.)
C. & D. S., U.P. Jal Nigam
Lucknow

PROJECT -: DETAILED ESTIMATE OF PROPOSED SLRM CENTRE

[ABSTRACT OF COST - TOILET BLOCK]

(Based on U.P.P.W.D. S.O.R. for District: Lucknow w.e.f. 03-11-2017/D.S.R.-2018)

S.N.	DESCRIPTION OF ITEM	SCH. NO.	QUANTITY	UNIT	RATES	AMOUNT
1	Excavation in foundation in ordinary soil (loam clay or sand) including lift upto 1.50 meter and lead upto 30 meter and including filling, watering and ramming of excavated earth into the trenches or into the space between the building and sides of foundation trenches or into the plinth and removal and disposal of sur-plus earth as directed by the Engineer incharge up to a distance of 30 meters from the foundation trenches.	PWD-251	9.829	CUM	110.00	1081.17
2	Filling of carted earth.	AR-I	0.000	CUM	324.40	0.00
3	Providing and laying cement concrete 1:4:8 (1 cement :4 coarse sand :8 graded Stone aggregate 40 mm nominal size) including supply of all materials, labour T & P etc required for proper completion of the work and curing complete also including cost of formwork in foundation & floors.	(PWD-281)	2.791	CUM	5410.00	15097.55
4	Providing and injecting chemical emulsion for pre constructional antitermite treatment and creating a chemical barrier under and around the column pits wall trenches basement excavation top surface if plinth filling junction of wall and floor, along the the external perimeter of binding expansion joints, surrounding of pipes and conduits etc, complete.					
	(plinth area of the building at ground floor only shall be measured as per I.S.6313 (Part II 1981) Alderine emulsifiable concentrate or any other approved material such as Heptachlor or Chlordane will be used. The rate of application of chemical emulsion shall be as follows : (1) Treatment for masonry & foundation 5 liters per sqm. (2) Back fill in immediate contact with foundation 7.5 liters/sqm (3) Treatment of top surface of plinth filling 5 liters/sqm					
	(4) Treatment junction of wall and the floor 7.5 liters /sqm (5) Treatment of soil along external perimeter of building 7.5 liters/sqm (6) Treatment of soil under apron along external perimeter 5 liters/sqm. (As per manufacturer's standard dilution)	(PAR-2018)	7.170	SQM	210.00	1505.70

5	R.C.C. work with cement approved coarse sand and 2 cm. guage approved stone grit in the proportion of 1:1.5:3 in lintels of doors and windows excluding supply of reinforcement and its fixing and binding the same with 24 BWG binding wire and including necessary centering and shuttering etc.and also including supply of all materials, labour and tools and plants etc, required for proper completion of the works. including cost of binding wire. The rate excludes making of drip course which shall be paid extra.	(A.R.-II)				
(a)	Ground Floor		0.607	CUM	7704.50	4676.93
6	As in item no. 6 above but for slabs (Using 1:1.5:3 Mix concrete)	(A.R.-II)				
(a)	Ground Floor		0.929	CUM	7829.50	7270.11
7	M-150 brick work in 1:6 (one cement and six coarse sand sand of 2.25 fineness modulus) mortar in foundation & plinth including supply of all materials, labour and T & P etc required for proper completion of the work.	PWD-303+305b-305a	6.240	CUM	3600.00	22463.31
8	Providing and laying damp-proof course 40mm thick with cement concrete 1:2:4 (1 cement : 2 coarse sand (zone-III): 4 graded stone aggregate 12.5mm nominal size)	D.S.R.- 4.10/1.1331	2.141	SQM	307.03	657.45
9a	Providing & applying a coat of residual petroleum bitumen of grade of VG-10 of approved quality using 1.7kg per square metre on damp proof course after cleaning the surface with brushes and finally with a piece of cloth lightly soaked in kerosene oil	D.S.R.- 4.13/1.1331	2.141	SQM	97.08	207.87
9	Same as in item No. 11 above but in super-structure above plinth level up to floor two level (up to two storeys) including necessary cutting and moulding of brick work as required and also including honeycombed brick work in thickness of wall more than 12cms. (1:6 cement : coarse sand)	(PWD-303+305b-305a+309+310)				
(a)	Ground Floor		4.763	CUM	4215.00	20076.58
10	Same as in item no. 9 but in 1:4 cement and coarse sand mortar in superstructure for wall thickness 12 cms & below brick work.	PWD-305b+309+310+310A				
(a)	Ground Floor		1.643	CUM	4790.00	7871.37
11	P/F Mild steel or iron in plain work such as reinforced concrete or reinforced, brick work (when not included in over all rates) wrought to required shape as necessary including bending for proper completion of the work and including supply of steel its wastage bend hooks and authorised over lapping shall be measured upto floor two level.	(PWD- 504)				

(a)	Ground Floor		1.060	QTL	5400.00	5722.15
12	15mm thick plaster with cement mortar in proportion of 1:4 cement & coarse sand of 2.25 F.M.	D.S.R.- 13.5.1/1.1331	3.989	SQM	281.48	1122.70
13	12 mm cement plaster in single coat on rough side of single or half brick wall for interior plastering up to floor two level including internal rounded angles not exceeding 80 mm in girth and finished even and smooth. (1) 1 cement : 6 fine sand	(PWD -586)				
(a)	Ground Floor		17.903	SQM	120.00	2148.39
14	12mm cement plaster in single coat on fair side of single or half brick wall for exterior plastering up to floor two level including internal rounded angles chamfers, and/or rounded angles not exceeding 80mm in girth and finished even and smooth no extra for mixing any additive. (1)1 cement : 6 fine sand.	(PWD -586)				
(a)	Ground Floor		49.704	SQM	120.00	5964.53
15	Providing and laying Ceramic glazed floor tiles of size 300x300 mm (thickness to be specified by the manufacturer) of 1st quality conforming to IS : 15622 of approved make in colours such as White, Ivory, Grey, Fume Red Brown, laid on 20 mm thick cement mortar 1:4 (1 Cement : 4 Coarse sand), jointing with grey cement slurry @ 3.3kg/sqm including pointing the joints with white cement and matching	DSR - 11.37/1.1331				
(a)	Ground Floor		4.519	SQM	818.02	3696.43
16	Providing and fixing 1st quality ceramic glazed wall tiles conforming to IS: 15622 (thickness to be specified by the manufacturer), of approved make, in all colours, shades except burgundy, bottle green, black of any size as approved by Engineer-in-Charge, in skirting, risers of steps and dados, over 12 mm thick bed of cement mortar 1:3 (1 cement : 3 coarse sand) and jointing with grey cement slurry @ 3.3kg per sqm, including pointing in white cement mixed with pigment of matching shade complete.	DSR - 8.31/1.1331				
(a)	Ground Floor		14.952	SQM	909.28	13595.49
17	Cement concrete flooring 1:2:4 (1 cement :2 coarse sand :4 graded stone aggregate 12-20mm nominal size laid in one layer neat cement (25 mm thick floor).	(PWD-601a)	8.568	SQM	255.00	2184.84
18	Providing and fixing of Flush doors commercial quality conforming to I.S. 2202 part-I (1983) including fixing of wooden cleats and stoppers and including fixing and adjustment of hinges, bolts locks, handles spring fitting with necessary screws to be supplied departmentally. 30 mm thick	(DSR 9.21.2/1.1331				

	(a) Single leaf		4.725	SQM	1606.04	7588.52
19	M.S. or Iron work of small sizes and sections such as holding down bolts, hold fast tie rods, gratings etc. wrought to required from including supply of steel bolts, nuts wastage etc and fixing required for proper completion of the work.					
	(a) Providing & fixing of hold fast for chaukhats of doors and windows.	PWD-502	13.200	KG	56.00	739.20
	(b) Providing & fixing of door / windows grill.	PWD-502	8.100	KG	56.00	453.60
	(c) Z-Section steel windows (openable)	PWD-502	9.180	KG	56.00	514.08
	(d) Angle iron door chaukhats 40*40*5	PWD-502	44.550	KG	56.00	2494.80
20	Fixing of Door, windows/ventilators chaukhats in position.					
	(a) Door chaukhats	LKO-2008	3.000	NOS	76.80	230.40
	(b) Window chaukhats	-4% vat	0.000	NOS	67.20	0.00
	(c) Ventilator chaukhats		2.000	NOS	38.40	76.80
21	White washing two coat including supply of all materials, labour and T & P etc. required for proper completion of the work.	(PWD 671+672)				
	(a) Ground Floor		17.903	SQM	14.00	250.65
22	Finishing wall with water proof cement paint of approved make and quality on new work with three coats to give an even shade including supply of all materials, labour and T & P etc. required for proper completion the work. Two Coat	(PWD - 660+661)				
	(a) Ground Floor		49.704	SQM	68.50	3404.75
23	White washing two coat including supply of all materials, labour and T & P etc. required for proper completion of the work.	(PWD 671+672)				
	(a) Ground Floor		5.021	SQM	14.00	70.29
24	Providing & fixing Stainless steel sliding door bolts ISI marked anodised (anodic coating not less than grade AC 10 as per IS : 1868) transparent or dyed to required colour or shade with nuts and screws etc complete. (a) 250mm x 16mm .					
		(M.R.)	6.000	NOS	350.00	2100.00
25	Providing and fixing stainless steel handles with screws etc. complete (a) 125 mm	(M.R.)	6.000	NOS	200.00	1200.00
26	Providing and laying integral cement based water proofing treatment including preparation of surface as required for treatment of roofs, balconies, terraces etc consisting of following operations:					
	(a) Applying a slurry coat of neat cement using 2.75 kg/sqm of cement admixed with water proofing compound conforming to IS. 2645 and approved by Engineer-in-charge over the RCC slab including adjoining walls upto 300 mm height including cleaning the surface before treatment					

(b) Laying brick bats with mortar using broken bricks/brick bats 25 mm to 115 mm size with 50% of cement mortar 1:5 (1 cement : 5 coarse sand) admixed with water proofing compound conforming to IS : 2645 and approved by Engineer-in-charge over 20 mm thick layer of cement mortar of mix 1:5 (1 cement :5 coarse sand) admixed with water proofing compound conforming to IS : 2645 and approved by Engineer-in-charge to required slope and treating similarly the adjoining walls upto 300 mm height including rounding of junctions of walls and slabs.						
(c) After two days of proper curing applying a second coat of cement slurry using 2.75 kg/ sqm of cement admixed with water proofing compound conforming to IS : 2645 and approved by Engineer-in-charge						
(d) Finishing the surface with 20 mm thick jointless cement mortar of mix 1:4 (1 cement :4 coarse sand) admixed with water proofing compound conforming to IS : 2645 and approved by Engineerin- charge including laying glass fibre cloth of approved quality in top layer of plaster and finally finishing the surface with trowel with neat cement slurry and making pattern of 300x300 mm square 3 mm deep.						
(e) The whole terrace so finished shall be flooded with water for a minimum period of two weeks for curing and for final test. All above operations to be done in order and as directed and specified by the Engineer-in-Charge :						
With average thickness of 120 mm and minimum						
thickness at khurra as 65 mm.	(DSR -22.7.1)	5.700	SQM	1234.22	7034.83	
27 Painting two coat over priming coat (but including cost of priming coat) on steel and other metal surfaces up to 10 cm. width or girth or small articles not exceeding 0.10sqm in area white superior synthetic enamel such as LUXOL3,Hi-gloss apcolite superlac, DULUX specified brushing to give an even shade and including cleaning the surface of all dirt,dust and other foreign matter sand papering and stoping including cost of all materials, labour tools and plants etc. required for proper completion of the work.						
	(PWD-641+642)	3.375	SQM	95.50	322.31	
28 Same as item 27 above but on new wood surface.						
	(PWD-641+642)	9.450	SQM	95.50	902.48	
29 Providing & fixing glass panes with putty and glazing clips in steel doors, windows, clerestory windows, all complete with : 4.0 mm thick glass panes						
	(DSR 10.30.1/1.1331)	0.540	SQM	1020.41	551.02	
TOTAL					143276.31	
G. TOTAL					143276.31	
SAY RS.		1.43				

Resident Engineer (Tech.)
G. & B. S., U.P. Jal Nigam
Lucknow

PROJECT -: DETAILED ESTIMATE OF PROPOSED SLRM CENTRE

[DETAILS OF MEASUREMENT - TOILET BLOCK]

S.NO.	DESCRIPTION OF ITEM	NO.	L	B	H	QTY	UNIT
1	Earth work in excavation						
	SECTION 1-1 FOR 115 MM TH. WALLS						
	W.C. (MALE)	1	1.100	0.600	0.600	0.396	
	W.C. (MALE)/URINAL	1	0.743	0.600	0.600	0.267	
	W.C. (MALE/FEMALE)	1	1.050	0.600	0.600	0.378	
	SECTION 2-2						
	OUTER WALLS	1	2.595	0.760	1.000	1.972	
		1	1.430	0.760	1.000	1.087	
		1	1.115	0.760	1.000	0.847	
		1	1.075	0.760	1.000	0.817	
		1	1.480	0.760	1.000	1.125	
		1	3.000	0.760	1.000	2.280	
	SECTION FOR ENT. STEP						
		1	1.190	0.675	0.300	0.241	
		1	2.065	0.675	0.300	0.418	
					TOTAL	9.829	CUM
2	Filling of carted earth						
	AVAILABLE EARTH 30% OF ITEM NO. 1					-2.949	
	UNDER FLOOR						
	URINALS	1	1.250	0.655	0.225	0.184	
	W.C. (MALE)	2	1.250	1.000	0.225	0.563	
	W.C. (FEMALE)	1	1.000	1.200	0.225	0.270	
					TOTAL		CUM
3	Base concrete (1:4:8)						
	SECTION 1-1 FOR 115 MM TH. WALLS						
	W.C. (MALE)	1	1.100	0.600	0.150	0.099	
	W.C. (MALE)/URINAL	1	0.743	0.600	0.150	0.067	
	W.C. (MALE/FEMALE)	1	1.050	0.600	0.150	0.095	
	SECTION 2-2						
	OUTER WALLS	1	2.595	0.760	0.150	0.296	
		1	1.430	0.760	0.150	0.163	
		1	1.115	0.760	0.150	0.127	
		1	1.075	0.760	0.150	0.123	
		1	1.480	0.760	0.150	0.169	
		1	3.000	0.760	0.150	0.342	
	SECTION FOR ENT. STEP						
		1	1.190	0.675	0.150	0.120	
		1	2.065	0.675	0.150	0.209	
	UNDER FLOOR						
	URINALS	1	1.250	0.655	0.075	0.061	
	W.C. (MALE)	2	1.250	1.000	0.075	0.188	
	W.C. (FEMALE)	1	1.000	1.200	0.075	0.090	
	UNDER APRON						
	APRON	2	3.425	0.600	0.075	0.308	
		2	3.715	0.600	0.075	0.334	
					TOTAL	2.791	CUM
4	Anti-termite treatment	1				7.170	
					TOTAL	7.170	SQM
5	R.C.C. work in Lintel						
(a)	Ground Floor						
	PLINTH BAND						
	SECTION 1-1 FOR 115 MM TH. WALLS						
	W.C. (MALE)	1	1.365	0.230	0.100	0.031	
	W.C. (MALE)/URINAL	1	1.193	0.230	0.100	0.027	
	W.C. (MALE/FEMALE)	1	1.315	0.230	0.100	0.030	
	SECTION 2-2						
	OUTER WALLS	1	2.595	0.230	0.100	0.060	
		1	1.430	0.230	0.100	0.033	

		1	1.115	0.230	0.100	0.026		
		1	1.340	0.230	0.100	0.031		
		1	1.480	0.230	0.100	0.034		
		1	3.000	0.230	0.100	0.069		
	LINTEL BAND							
	OUTER WALLS	1	3.115	0.230	0.100	0.072		
		1	1.250	0.230	0.100	0.029		
		1	1.455	0.230	0.100	0.033		
		2	1.345	0.230	0.100	0.062		
		1	1.200	0.230	0.100	0.028		
	W.C. (MALE/MALE)	2	1.250	0.115	0.100	0.029		
	W.C. (MALE/FEMALE)	1	1.200	0.115	0.100	0.014		
					TOTAL	0.607	CUM	
6	R.C.C. work in slab							
(a)	Ground Floor							
	TOILET	1	1.115	1.885	0.125	0.263		
		1	1.710	3.115	0.125	0.666		
					TOTAL	0.929	CUM	
7	B/W In foundation							
	SECTION 1-1 FOR 115 MM TH. WALLS							
	W.C. (MALE)	1	1.365	0.230	0.325	0.102		
		1	1.365	0.345	0.300	0.141		
		1	1.365	0.460	0.150	0.094		
	W.C. (MALE)/URINAL	1	1.193	0.230	0.325	0.089		
		1	1.193	0.345	0.300	0.123		
		1	1.193	0.460	0.150	0.082		
	W.C. (MALE/FEMALE)	1	1.315	0.230	0.325	0.098		
		1	1.315	0.345	0.300	0.136		
		1	1.315	0.460	0.150	0.091		
	SECTION 2-2							
	OUTER WALLS	1	2.595	0.230	0.325	0.194		
		1	2.595	0.345	0.550	0.492		
		1	2.595	0.460	0.150	0.179		
		1	2.595	0.575	0.150	0.224		
		1	1.430	0.230	0.325	0.107		
		1	1.430	0.345	0.550	0.271		
		1	1.430	0.460	0.150	0.099		
		1	1.430	0.575	0.150	0.123		
		1	1.115	0.230	0.325	0.083		
		1	1.115	0.345	0.550	0.212		
		1	1.115	0.460	0.150	0.077		
		1	1.115	0.575	0.150	0.096		
		1	1.340	0.230	0.325	0.100		
		1	1.340	0.345	0.550	0.254		
		1	1.340	0.460	0.150	0.092		
		1	1.340	0.575	0.150	0.116		
		1	1.480	0.230	0.325	0.111		
		1	1.480	0.345	0.550	0.281		
		1	1.480	0.460	0.150	0.102		
		1	1.480	0.575	0.150	0.128		
		1	3.000	0.230	0.325	0.224		
		1	3.000	0.345	0.550	0.569		
		1	3.000	0.460	0.150	0.207		
		1	3.000	0.575	0.150	0.259		
	SECTION FOR ENT. STEP							
		1	1.115	0.600	0.300	0.201		
		1	1.115	0.300	0.150	0.050		
		1	1.915	0.600	0.300	0.345		
		1	1.915	0.300	0.150	0.086		
					TOTAL	6.240	CUM	
8	D.P.C.							
	OUTER WALLS	1	3.115	0.230		0.716		
		1	1.250	0.230		0.288		
		1	1.455	0.230		0.335		

		2	1.345	0.230		0.619	
		1	1.200	0.230		0.276	
	W.C. (MALE/MALE)	2	1.250	0.115		0.288	
	W.C. (MALE/FEMALE)	1	1.200	0.115		0.138	
					TOTAL	2.659	SQM
DEDUCTION (-)							
	D	3	0.750	0.230		0.518	
					TOTAL	0.518	SQM
					TOTAL	2.141	SQM
9a. Bitumen Painting on D.P.C.							
Same as item no.9						2.141	SQM
9 B/W In Superstructure							
(a) GROUND FLOOR					(2.9-0.125-0.1)		
	OUTER WALLS	1	3.115	0.230	2.675	1.917	
		1	1.250	0.230	2.675	0.769	
		1	1.455	0.230	2.675	0.895	
		2	1.345	0.230	2.675	1.655	
		1	1.200	0.230	2.675	0.738	
					TOTAL	5.974	CUM
DEDUCTION (-)							
	D	3	0.750	0.230	2.100	1.087	
	V	2	0.600	0.230	0.450	0.124	
					TOTAL	1.211	CUM
					TOTAL	4.763	CUM
10 B/W In Superstructure (115 mm thick)							
(a) GROUND FLOOR					(2.9-0.125-0.1)		
	W.C. (MALE/MALE)	2	1.250	0.115	2.675	0.769	
	W.C. (MALE/FEMALE)	1	1.200	0.115	2.675	0.369	
	PARAPET	1	2.825	0.115	0.450	0.146	
		1	2.885	0.115	0.450	0.149	
		1	1.480	0.115	0.450	0.077	
		1	1.455	0.115	0.450	0.075	
		1	1.115	0.115	0.450	0.058	
					TOTAL	1.643	CUM
11 M. S. work in R.C.C.							
(a) Ground Floor							
	qty same as item no (6a)*1.00*0.785		(Lintel)			0.477	
	qty same as item no (7a)*0.80*0.785		(Slab)			0.583	
					TOTAL	1.060	QTL
12 15mm plinth plaster							
Outer plaster							
	OUTER SIDE	2	2.825		0.150	0.848	
		2	3.115		0.150	0.935	
Inner plaster							
	W.C. (FEMALE)	1	4.400		0.150	0.660	
	W.C. (MALE)	2	4.500		0.150	1.350	
	URINAL SIDE	1	1.310		0.150	0.197	
					TOTAL	3.989	SQM
13 12mm cement plaster (Interior surface)							
(a) Ground Floor							
	W.C. (FEMALE)	1	4.400		1.575	6.930	
	W.C. (MALE)	2	4.500		1.575	14.175	
	URINAL SIDE	1	1.310		1.575	2.063	
					TOTAL	23.168	SQM
DEDUCTION (-)							
	D	3	0.750		2.100	4.725	
	V	2	0.600		0.450	0.540	
					TOTAL	5.265	SQM
					NET TOTAL	17.903	SQM

14	12 mm Thick plaster (outer side)							
(a)	Ground Floor							
	OUTER SIDE	2	2.825		3.350	18.928		
		2	3.115		3.350	20.871		
	TERRACE PARAPET	1	2.825		1.015	2.867		
		1	2.885		1.015	2.928		
		1	1.480		1.015	1.502		
		1	1.455		1.015	1.477		
		1	1.115		1.015	1.132		
					TOTAL	49.704	SQM	
15	Ceremic tiles							
	FLOOR TILES							
	URINALS	1	1.250	0.655		0.819		
	W.C. (MALE)	2	1.250	1.000		2.500		
	W.C. (FEMALE)	1	1.000	1.200		1.200		
					TOTAL	4.519	SQM	
16	Ceremic tiles							
	WALL TILES							
	W.C. (FEMALE)	1	4.400		1.200	5.280		
	W.C. (MALE)	2	4.500		1.200	10.800		
	URINAL SIDE	1	1.310		1.200	1.572		
					TOTAL	17.652	SQM	
	DEDUCTION (-)							
	D	3	0.750		1.200	2.700		
					TOTAL	2.700	SQM	
					G.TOTAL	14.952	SQM	
17	25 mm thick C.C. Flooring							
	APRON	2	3.425	0.600		4.110		
		2	3.715	0.600		4.458		
					TOTAL	8.568	SQM	
18	30mm thick Flush doors							
	SINGLE LEAF							
	D	3	0.750		2.100	4.725		
					TOTAL	4.725	SQM	
19	M.S.Work in D/W							
(a)	Hold fast							
	DOORS	3	6.000	0.600		10.800		
	WINDOWS		4.000	0.600				
	VENTILATORS	2	2.000	0.600		2.400		
					TOTAL	13.200	KG	
(b)	M.S.Grill							
	G.F.							
	V	2	0.600	0.450	15.000	8.100		
					TOTAL	8.100	KG.	
(c)	Z-Section Windows							
	G.F.							
	V	2	0.600	0.450	17.000	9.180		
					TOTAL	9.180	KG.	
(d)	Angle Iron door Chaukhats (40X40X5 mm)							
	D	3	4.950		3.000	44.550		
					TOTAL	44.550	KG	
20	Fixing D/W/V Chaukhats.							
	Door Chaukhats					3.000	NOS.	
	Windows Chaukhats						NOS.	
	Ventillator Chaukhats					2.000	NOS.	
21	White wash (Inner surface)							
(a)	Ground Floor (Same as Inside plaster)				TOTAL	17.903	SQM	
22	Water proof cement paint							
(a)	Ground Floor (Same as outer plaster)				TOTAL	49.704	SQM	
23	White wash (Ceiling)							

	URINALS	1	1.250	0.655		0.819	
	W.C. (MALE)	2	1.250	1.000		2.500	
	W.C. (FEMALE)	1	1.000	1.200		1.200	
	PROJECTION AT SLAB LVL.	1	1.115	0.450		0.502	
					TOTAL	5.021	SQM
24	Sliding bolt.						
	250 x 16mm				TOTAL	6.000	NOS
25	Handle (125mm)						
	(a) 125mm				TOTAL	6.000	NOS
26	Brick coba treatment						
	TERRACE	1	1.000	1.430		1.430	
		1	1.480	2.885		4.270	
					TOTAL	5.700	SQM
27	Steel painting						
	GRILLS						
	G.F.						
	V	2	0.600	0.450	1.000	0.540	
	DOOR CHAUKHATS						
	SINGLE LEAF						
	Ground Floor						
	D	3	0.750	2.100	0.600	2.835	
					TOTAL	3.375	SQM
28	Painting on wood						
	SINGLE LEAF						
	Ground Floor						
	D	3	0.750	2.100	2.000	9.450	
					TOTAL	9.450	SQM
29	Glass panes						
	V	2	0.600	0.450		0.540	
					TOTAL	0.540	SQM

Shruti
Resident Engineer (Tech.)
C. & D. S., U.P. Jal Nigam
Lucknow

SCHEDULE OF QUANTITIES FOR PLUMBING WORKS
PROJECT -: DETAILED ESTIMATE OF PROPOSED SLRM CENTRE

INTERNAL PLUMBING WORKS - TOILET BLOCK

SL. NO	DSR 2018	DESCRIPTION	UNIT	QTY	RATE (in Rs)	AMOUNT (in Rs)
1	17.1	Providing and fixing water closet squatting pan (Indian type W.C. pan) with 100mm sand cast Iron P or S trap, 10 litre low level white P.V.C. flushing cistern with manually controlled device (handle lever) conforming to IS:7231, Parryware/Hindware/Seabird/Orient (Coral) with all fittings and fixtures complete including cutting and making good the walls and floors wherever required.				
	17.1.1	White Vitreous china Orissa pattern W.C. pan of size 580x440mm with integral type foot rests	each	3.00	5421.50	16264.50
2	17.4	Providing and fixing white vitreous china flat back half stall urinal of size 580*380*350mm with white PVC automatic flushing cistern, with fittings, standard size C.P. brass flush pipe, spreaders with unions and clamps (all in D.P. brass) with waste fitting as per IS : 2556, C.I. trap with outlet grating and other couplings in C.P. brass including painting of fittings and cutting and making good the walls and floors wherever required:				
	17.4.2	Range of Two half stall urinals with 5 litre PV.C. automatic flushing cistern.	each	1.00	7677.75	7677.75
3	8.10	Providing and fixing stone slab table rubbed, edges rounded and polished of size 75x50cm deep and 1.8cm thick fixed in Urinal partitions by cutting a chase of appropriate width with chase cutter and embedding the stone in the chase with epoxy grout or with cement concrete 1:2:4 (1cement: 2coarse sand: 4graded stone aggregate 6mm nominal size) as per direction of Engineer-in-charge and finished smooth.				
	8.10.2	Granite Stone of approved shade	Sqm.	1.00	3216.90	3216.90
		CP Brass fittings				
4	18.21	Providing and fixing unplasticised PVC connection pipe with brass unions				
	18.21.2	45 cm length				
	18.21.2.1	15 mm nominal bore	each	5.00	83.00	415.00

5	18.49	Providing and fixing C.P. brass bib cock of approved quality conforming to IS:8931				
	18.49.1	a) 15 mm nominal bore	each	3.00	418.95	1256.85
					TOTAL [I]	28831.00
		LESS 13.33% FOR GST & LABOUR CESS (DSR-2018/1.1331)			TOTAL [I]	25444.36
II PVC PIPES & FITTINGS AND RAIN WATER PIPES						
1	DSR no.19.2.1	Providing and laying cement concrete 1:5:10(1 cement : 5 coarse sand : 10 graded stone aggregate 20mm nominal size) around P.V.C Soil and waste pipe including bed concrete as per standard design(embedded in the flooring / ground)				
		110 mm dia	metre	5.00	817.00	4085.00
		90 mm dia	metre	5.00	473.00	2365.00
2	12.41	Providing and fixing on wall face unplasticised-Rigid PVC rain water pipes conforming to IS: 13592 Type A including jointing with seal ring conforming to IS: 5382 leaving 10mm gap for thermal expansion.				
	12.41.2	110 mm	Metre	3.50	305.05	1067.68
3	12.42	Providing and fixing on wall face unplasticised PVC moulded fittings/accessories for unplasticised Rigid PVC rain water pipes conforming to IS:13592 Type A including jointing with seal ring conforming to IS:5382 leaving 10mm gap for thermal expansion.				
	12.42.5.2	Bend 87.5 degree				
	12.42.5.2	110 mm Bend	Each	1.00	129.85	129.85
	12.42.6	Shoe (Plain)				
	12.42.6.2	110 mm Shoe	Each	1.00	113.80	113.80
4	12.44	Providing and fixing to the inlet mouth of rain water pipe cast iron grating 15 cm diameter and weighing not less than 440 grams.				
			Each	1.00	47.25	47.25
5	12.43	Providing and fixing unplasticised-PVC pipe clips of approved design to unplasticised-PVC rain water pipes by means of 50x50x50 mm hard wood plugs, screwed with MS screws of required length including cutting brick work and fixing in cement mortar 1:4 (1 cement : 4 coarse sand) and making good the wall etc. complete.				
	12.43.2	110 mm	Each	2.00	288.80	577.60

6	12.22	Making khurras 45x45 cm with average minimum thickness of 5 cm cement concrete 1:2:4 (1 cement : 2 coarse sand : 4 graded stone aggregate of 20 mm nominal size) over PVC sheet 1m x 1 m x 400 micron, finished with 12 mm cement plaster 1:3 (1 cement : 3 coarse sand) and a coat of neat cement, punning, rounding the edges and making and finishing the outlet complete.	Each	1.00	244.05	244.05
					TOTAL [II]	8630.23
		LESS 13.33% FOR GST & LABOUR CESS			TOTAL [II]	7616.47
III INTERNAL & EXTERNAL WATER SUPPLY WORKS						
1		Providing and fixing Chlorinated Polyvinyl Chloride (CPVC) pipes, having thermal stability for hot & cold water supply including all CPVC plain & brass threaded fittings i/c fixing the pipe with clamps at 1.00m spacing. This includes jointing of pipes & fittings with one step CPVC solvent cement and the cost of cutting chases and making good the same including testing of joints complete as per direction of Engineer in Charge.				
		Concealed work including cutting chases and making good the walls etc.				
		Concealed work				
	18.8.2	20mm dia nominal outer dia pipes	Rm.	5.00	478.15	2390.75
	18.8.3	25mm dia nominal outer dia pipes	Rm.	5.00	561.95	2809.75
		Exposed on wall				
2		Providing and fixing GI pipes complete with GI fittings and clamps, including cutting and making good walls etc. (internal work).				
		Internal work-Exposed on wall				
	18.10.1	15mm dia nominal bore	Metre	0	284.90	0.00
	18.10.2	20mm dia nominal bore	Metre	5	344.10	1720.50
3		Painting GI pipes and fittings with SYNTHETIC enamel paint over a ready mixed priming coat, both of approved quality for new work.				
	18.38.1	15mm dia nominal bore	Metre	0	15.20	0.00
	18.38.2	20mm dia nominal bore	Metre	5	18.15	90.75
4		Providing and fixing GI Union in GI pipes including cutting and threading the pipe and making long screws etc. complete (new work).				
	18.46.1	15mm dia nominal bore	Each	0	235.75	0.00
	18.46.2	20mm dia nominal bore	Each	2	261.15	522.30

5	18.17	Providing and fixing gun metal gate valve with wheel of approved quality.				
	18.17.1	25mm dia nominal bore	Each	1.00	497.15	497.15
6	18.48	Providing and placing on terrace (at all floor levels)polyethylene water storage tank ISI : 12701 marked indicating the BIS License No. with cover and suitable locking arrangement and making necessary holes for inlet, outlet and over flow pipes but without fitting and base support for tank.[Sintex, Electroplast, Star, Lotus or equivalent having valid ISI license].				
		Capacity in Per Liters		500	8.80	4400.00
					TOTAL[III]	12431.20
		LESS 13.33% FOR GST & LABOUR CESS			TOTAL[III]	10970.96
IV SEWERAGE SYSTEM						
1	2.10	Excavating trenches of required width for pipes, cables etc. including excavation for sockets and dressing of sides, ramming of bottoms, depth upto 1.5m including getting out the excavated soil, and then returning the soil as required, in layers not exceeding 20cm in depth including consolidating each deposited layer by ramming, watering etc. and disposing of surplus excavated soil as directed, within a lead of 50m.				
	2.10.1	All kinds of soil				
	2.10.1.2	Pipes, cables etc. exceeding 80mm dia but not exceeding 300mm.	metre	3.00	364.20	1092.60
2	19.1	Providing, laying and jointing glazed stoneware pipes grade 'A' with stiff mixture of cement mortar in the proportion of 1:1 (1 cement : 1 fine sand) including testing of joints etc. complete.				
	19.1.1	100mm diameter	metre	3.00	317.05	951.15
3	19.2	Providing and laying cement concrete 1:5:10 (1 cement: 5 coarse sand : 10 graded stone aggregate 40mm nominal size) all round S.W. pipes including bed concrete as per standard design				
	19.2.1	100mm dia SW pipe	metre	3.00	817.00	2451.00

4	19.4	Providing and fixing square-mouth S.W. gully trap grade'A' complete with C.I. grating, brick masonry chamber with water tight C.I. cover with frame of 300 x300 mm size (inside) the weight of cover to be not less than 4.50 kg and frame to be not less than 2.70 kg as per standard design				
	19.4.2	150 x 100 mm size P type				
	19.4.2.2	With Sewer bricks conforming to IS : 4885	each	1.00	2321.45	2321.45
					TOTAL[IV]	6816.20
		LESS 13.33% FOR GST & LABOUR CESS			TOTAL[IV]	6015.53
NON SCHEDULED ITEMS						
V SANITARY INSTALLATIONS & C.P FITTINGS						
1	NSR	Providing and fixing on wall face unplasticised Rigid PVC soil and waste water pipes conforming to IS : 13592 Type B including jointing with seal ring conforming to IS : 5382 leaving 10 mm gap for thermal expansion . (i) Single socketed pipes.				
		a) 110mm dia P.V.C. pipe	Rm	10.00	760.00	7600.00
		b) 90mm dia P.V.C. pipe	Rm	5.00	610.00	3050.00
2	NSR	Providing & fixing UPVC Floor trap of self cleansing design with CP Jali complete in all respects. (Make : Supreme / Finolex / Prince)				
		P-Trap type Floor Trap 110 x 110 mm	Nos.	3.00	545.00	1635.00
3	NSR	Providing and fixing on wall face unplasticised - PVC moulded fittings/accessories for unplasticised Rigid PVC pipes including jointing with seal ring leaving 10 mm gap for thermal expansion.				
		110mm bend	Each	5.00	255.00	1275.00
		90 mm bend	Each	3.00	220.00	660.00
		Coupler				
		110mm	Each	10.00	170.00	1700.00
		90mm	Each	5.00	150.00	750.00
		Single tee with door				
		110x110x110 mm	Each	0.00	355.00	0.00
		90x90x90 mm	Each	0.00	295.00	0.00

4	NSR	Providing and fixing pvc Inlet fitting with 2 inlets 80 mm size fabricated from 110 mm dia PVC pipes(approx. length=150mm to 300mm) and fixed to PVC trap with joint and set in cement concrete as per standard drawing complete.	Each	2.00	900.00	1800.00
TOTAL [V]						18470.00
TOTAL INTERNAL WATER SUPPLY & SANITATION WORKS [I+II+III+IV+V]						68517.33

Handwritten signature
Resident Engineer (Tech.)
C. & D. S., U.P. Jal Nigam
Lucknow

PROJECT -: DETAILED ESTIMATE OF PROPOSED SLRM CENTRE

0

(COST OF SOAK PIT)

S.N.	DESCRIPTION	DSR.18	UNIT	QTY.	RATE	AMOUNT
I	SOAK PIT					
1	Making soak pit 2.5 m diameter 3.0 metre deep with 45 x 45 cm dry brick honey comb shaft with bricks of class designation 75 and S.W. drain pipe 100 mm diameter, 1.8m long complete as per standard design.					
	With F.P.S. bricks	19.32.1	No.	2	22309.37	44618.75
	TOTAL COST OF SEWERAGE					44618.75

Trials
 Resident Engineer (Tech.)
 C. & D. S., U.P. Jal Nigam
 Lucknow

ANALYSIS OF RATE OF PIPES :-																		
S No.	Item	Basic Rate / Meter	Discount	Total Rate (A)	GST 18% on (A)	Cartage @ 4% on (A)	Sub Total (B)	Wastage @ 5% on (B)	Add for fitting etc @ 10 % on (B)	Sub Total	Unit Labour Charges / meter	Sub Total (C)	Sundries etc. @ 3% on (C)	Water & Electric charges @1.5% on (C)	Sub Total	Add CP @ 10%	Total	SAY
1	Providing & fixing Bottle Trap (With Internal Partition) 32mm Size With 250mm & 190mm Long Wall Connection Pipes & Wall Flange JAQUAR ALD-CHR-769	1250.00	-125.00	1125.00		45.00	1170.00	58.50	117.00	1345.50	150.00	1495.50	44.87	22.43	1562.80	156.28	1719.08	1720.00
2	Providing & fixing Soap Dispenser with Metallic bottle JAQUAR ACN-CHR-1137N	2450.00	-245.00	2205.00		88.20	2293.20	114.66	229.32	2637.18	150.00	2787.18	83.62	41.81	2912.60	291.26	3203.86	3205.00
3	Providing and fixing Hand Shower (Health Faucet) with 8mm Dia, 1 Meter Long Flexible Tube & Wall Hook JAQUAR ALD-CHR-573	1500.00	-150.00	1350.00		54.00	1404.00	70.20	140.40	1614.60	150.00	1764.60	52.94	26.47	1844.01	184.40	2028.41	2030.00
4	Providing & fixing Towel Rail 300mm Long For Wash Basin Area JAQUAR ACN-CHR-1101N	1200.00	-120.00	1080.00		43.20	1123.20	56.16	112.32	1291.68	150.00	1441.68	43.25	21.63	1506.56	150.66	1657.21	1655.00
5	Providing and fixing C.P. brass Two-way angle valve for EWC points & for fixing Ablution Health Fauct of approved quality conforming to15 mm nominal bore ESSCO SQT 526A	800.00	-80.00	720.00		28.80	748.80	37.44	74.88	861.12	150.00	1011.12	30.33	15.17	1056.62	105.66	1162.28	1160.00

ANALYSIS OF RATE OF PIPES :-

S No.	Item	Basic Rate / Meter	Discount	Total Rate (A)	GST 18% on (A)	Cartage @ 4% on (A)	Sub Total (B)	Wastage @ 5% on (B)	Add for fitting and painting etc @ 10 % on (B)	Sub Total	Unit Labour Charges / meter	Sub Total (C)	Sundries etc. @ 3% on (C)	Water & Electric charges @1.5% on (C)	Sub Total	Add CP @ 10%	Total	SAY
1	Providing & fixing UPVC Floor trap of self cleansing design with CP Jali complete in all respects. (Make : Supreme / Finolex / Prince)P-Trap type Floor Trap 110 x 110 mm																	
	110x110 mm CP grating	393.00	-39.30	353.70		14.15	367.85	18.39	36.78	423.03	50.00	473.03	14.19	7.10	494.31	49.43	543.74	545.00
2	Providing and fixing terminal guard.																	
	110 mm	42.00	-4.20	37.80		1.51	39.31	1.97	3.93	45.21	25.00	70.21	2.11	1.05	73.37	7.34	80.71	80.00
3	Providing and fixing on wall face unplasticised - PVC moulded fittings/accessories for unplasticised Rigid PVC pipes including jointing with seal ring leaving 10 mm gap for thermal expansion.																	
	110mm bend	179.00	-17.90	161.10		6.44	167.54	8.38	16.75	192.68	30.00	222.68	6.68	3.34	232.70	23.27	255.97	255.00
	90 mm bend	149.00	-14.90	134.10		5.36	139.46	6.97	13.95	160.38	30.00	190.38	5.71	2.86	198.95	19.90	218.85	220.00
	Coupler																	
	110mm	114.00	-11.40	102.60		4.10	106.70	5.34	10.67	122.71	25.00	147.71	4.43	2.22	154.36	15.44	169.79	170.00
	90mm	100.00	-10.00	90.00		3.60	93.60	4.68	9.36	107.64	25.00	132.64	3.98	1.99	138.61	13.86	152.47	150.00
	Single tee with door																	
	110x110x90 mm	215.00	-21.50	193.50		7.74	201.24	10.06	20.12	231.43	25.00	256.43	7.69	3.85	267.97	26.80	294.76	295.00
	110x110x110 mm	262.00	-26.20	235.80		9.43	245.23	12.26	24.52	282.02	25.00	307.02	9.21	4.61	320.83	32.08	352.92	355.00
4	Providing and fixing in floor and wall face unplasticised Rigid PVC soil and waste water pipes conforming to IS : 13592 Type B including jointing with seal ring conforming to IS : 5382 leaving 10 mm gap for thermal expansion . (i) Single socketed pipes.																	
	110 mm dia.	545.00	-54.50	490.50		19.62	510.12	25.51	51.01	586.64	75.00	661.64	19.85	9.92	691.41	69.14	760.55	760.00
	90 mm dia.	425.00	-42.50	382.50		15.30	397.80	19.89	39.78	457.47	75.00	532.47	15.97	7.99	556.43	55.64	612.07	610.00

SCHEDULE OF QUANTITIES FOR INTERNAL ELECTRICAL WORKS
PROJECT

PROJECT -: DETAILED ESTIMATE OF PROPOSED SLRM CENTRE

SCHEDULE ITEMS (AS PER PWD SCHE. 2018/DSR 2018)

NON - SCHEDULED ITEMS (AS PER MARKET RATES)

SI.No.	DESCRIPTION	Sch. No.	QTY.	UNIT	RATE	AMOUNT
<u>SUBHEAD I- WIRING POINTS</u>						
<u>UPPWD-2018</u>						
1	Wiring points for light with 1 sqmm.FRLSH PVC insulated single core copper conductor cable in PVC conduit pipe partly concealed in wall and partly laid in slab along with the reinforcement before concreting, complete with 1.5 sqmm.FRLSH PVC insulated multistrand copper conductor cable as earth continuity wire and piano type switch etc. complete in all respects.	138©	4	Each	610.00	2440.00
<u>TOTAL OF SUB-HEAD I (UPPWD-2018)</u>						<u>2440.00</u>
<u>SUBHEAD II-INSTALLATION OF LIGHT FIXTURES AND FANS</u>						
<u>UPPWD-2018</u>						
2	Supply & fixing of fancy type round ceiling fitting made of polycarbonate suitable for and with 1x15/18 watt CFL complete in all respect.	450(I)	4	Each	913.46	3653.84
3	Supply & fixing of industrial bulk head fitting with polycarbonate base guard, prismatic reflector silicon gasket suitable for and with 1 x 18 Watt CFL complete in all respect	449	2	Each	781.73	1563.46
<u>TOTAL OF SUB-HEAD II (UPPWD-2018)</u>						<u>5217.30</u>
<u>TOTAL OF SUB-HEAD (I+II)</u>						<u>7657.30</u>

Tripathi
Resident Engineer (Tech.)
C. & D. S., U.P. Jal Nigam
Lucknow

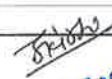
ANALYSIS FOR R.C.C. 1:1.5:3 MIX AS PER U.P.- P.W.D. 2017 RATES**A.R.-II**

1	<u>R.C.C. Work in Lintel (1: 1.5:3 mix)</u>		
	Rate as per U.P. P.W.D. 2017 (1: 2: 4 mix)	RS.	7250.00
	For 1: 1.5: 3 mix)		
	Difference of cement in consumption 2.02 bags		
	Extra cost of cement = 2.02 x 225.00	RS.	454.50
	Hence total cost of (1: 1.5: 3: mix)		
		RS.	7704.50
2	<u>R.C.C. Work in Slab (1: 1.5:3 mix)</u>		
	Rate as per U.P. P.W.D. 2017 (1: 2: 4 mix)	RS.	7375.00
	For 1: 1.5: 3 mix)		
	Difference of cement in consumption 2.02 bags		
	Extra cost of cement = 2.02 x 225.00	RS.	454.50
	Hence total cost of (1: 1.5: 3: mix)		
		RS.	7829.50
3	<u>R.C.C. Work in Beam (1: 1.5:3 mix)</u>		
	Rate as per U.P. P.W.D. 2017 (1: 2: 4 mix)	RS.	7400.00
	For 1: 1.5: 3 mix)		
	Difference of cement in consumption 2.02 bags		
	Extra cost of cement = 2.02 x 225.00	RS.	454.50
	Hence total cost of (1: 1.5: 3: mix)		
		RS.	7854.50
4	<u>R.C.C. Work in Raft (1: 1.5:3 mix)</u>		
	Rate as per U.P. P.W.D. 2017 (1: 2: 4 mix)	RS.	6100.00
	For 1: 1.5: 3 mix)		
	Difference of cement in consumption 2.0 bags		
	Extra cost of cement = 2.02 x 225.00	RS.	454.50
	Difference between 40 mm & 20 mm grit	RS.	90.00
	Hence total cost of (1: 1.5: 3: mix)	RS.	6644.50

8/10/20
Resident Engineer (Tech.)
C. & D. S., U.P. Jal Nigam
Lucknow

BILL OF QUANTITY OF PROPOSED 4.00 MT. WIDE M.S. GATE

S.N.	DESCRIPTION OF ITEM	SCH. NO.	QUANTITY	UNIT	RATES	AMOUNT
1	Mild steel or iron work in heavy sizes such as trusses built up gates, door frames, record racks, roof work gates etc. wrought to required from including supply of steel and its wastage including cost of bolts, nuts if required for and welding, grinding and making holes as required completion of work fabrication of holes doors, chaukhats nosing.	(PWD 503)	336.000	KG	56.00	18816.00
2	Painting one coat over priming coat (but including cost of priming coat) on steel and other metal surfaces up to 10 cm. width or girth or small articles not exceeding 0.10sqm in area white superior synthetic enamel such as LUXOL3,Hi-gloss apcolite superlac, DULUX specified brushing to give an even shade and including cleaning the surface of all dirt,dust and other foreign matter sand papering and stoping including cost of all materials, labour tools and plants etc. required for proper	(PWD- 641+ +642)	16.800	SQM	95.50	1604.40
TOTAL COST						20420.40


 Resident Engineer (Tech.)
 C. & D. S. U.P. Jal Nigam
 Lucknow

DETAILS MEASUREMENTS OF PROPOSED 4.0 MT. WIDE M.S. GATE

[DETAILS OF MEASUREMENT]

S.NO.	DESCRIPTION OF ITEM	NO.	L	B	H	QTY	UNIT
1	M.S. work	1	4.000	2.100	40.000	336.000	
					TOTAL	336.00	KG
2	Painting on M.S. work	1	4.000	2.100	2.000	16.800	
					TOTAL	16.800	SQM


 Resident Engineer (Roads)
 C. & D. S., U.P. Jal Nigam
 Lucknow

**PROJECT :-DETAILS ESTIMATE FOR THE CONSTRUCTION OF PROPOSED
SLRM (SOLID & LIQUID RESOURCE MANAGEMENT) CENTER**

4.5 M WIDE ROAD

S.No.	DSR/ PWD	DESCRIPTION OF ITEM	QTY	UNIT	RATES	AMOUNT
1	PWD 251	Excavation in foundation in ordinary Soil (Loam clay or sand) including lift upto 1.5m lead upto 30.0 m & including filling watering and ramming of excavated earth into the space between the building & sides of foundation trenches or into the plinth and removal & disposal surplus earth as directed by the engineer I/C within a lead of 30 m.from foundation trenches.	0.00	cum	110.00	0.00
2	DSR 16.1	Preparation and consolidation of sub grade with power road roller of 8 to 12 tonne capacity after excavating earth to an average of 22.5 cm depth, dressing to camber and consolidating with road roller including making good the undulations etc. and re-rolling the sub grade and disposal of surplus earth with lead upto 50 metres.	45.00	cum	138.34	6225.18
3	DSR 16.78.2	Construction of granular sub-base by providing close graded Material conforming to specifications, mixing in a mechanical mix plant at OMC, carriage of mixed material by ippers to work site, for all leads & lifts, spreading in uniform layers of specified thickness with motor grader on prepared surface and compacting with vibratory power roller to achieve the desired density, complete as per specifications and directions of Engineerin- Charge With material conforming to Grade-II (size range 53 mm to 0.075 mm) having CBR Value-25	6.75	cum	2327.51	15710.68
4	DSR 16.75	Providing and laying C.C. pavement of mix M-25 with ready mixed concrete from batching plant. The ready mixed concrete shall be laid and finished with screed board vibrator , vacuum dewatering process and finally finished by floating, brooming with wire brush etc. complete as per specifications and directions of Engineer-incharge. (The panel shuttering work shall be paid for separately). (Note:- Cement content considered in this item is @ 330 kg/cum. Excess/less cement used as per design mix is payable/ recoverable separately).	6.75	cum	7645.44	51606.73
		Cost for 45 Sqm.				73542.59
		Cost for 1.0 RM. & 4.5 MT. WIDE				7354.26

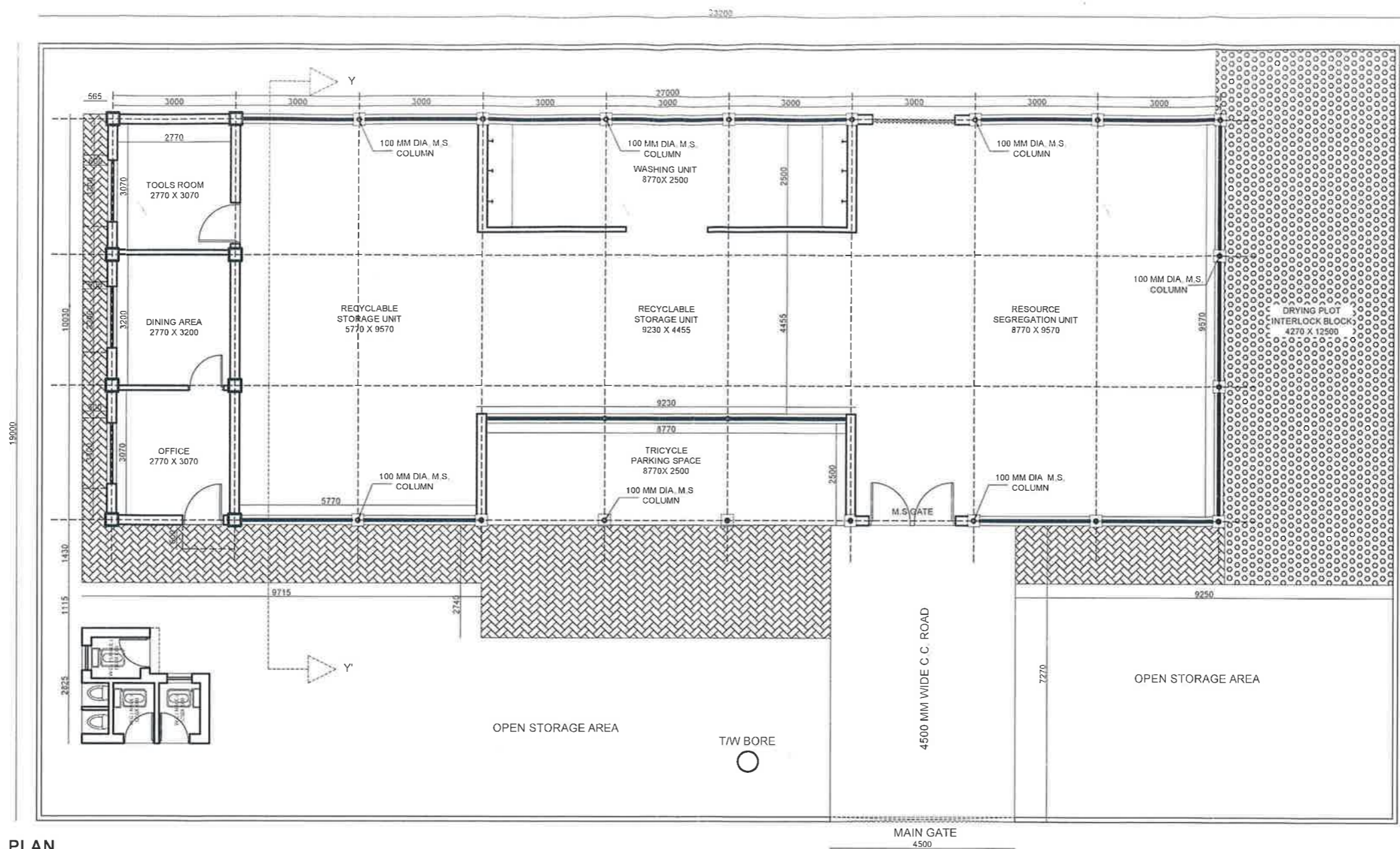
Prady
Resident Engineer (Tech.)
C. & D. S., U.P. Jal Nigam
Lucknow

**PROJECT :-DETAILS ESTIMATE FOR THE CONSTRUCTION OF PROPOSED
SLRM (SOLID & LIQUID RESOURCE MANAGEMENT) CENTER**

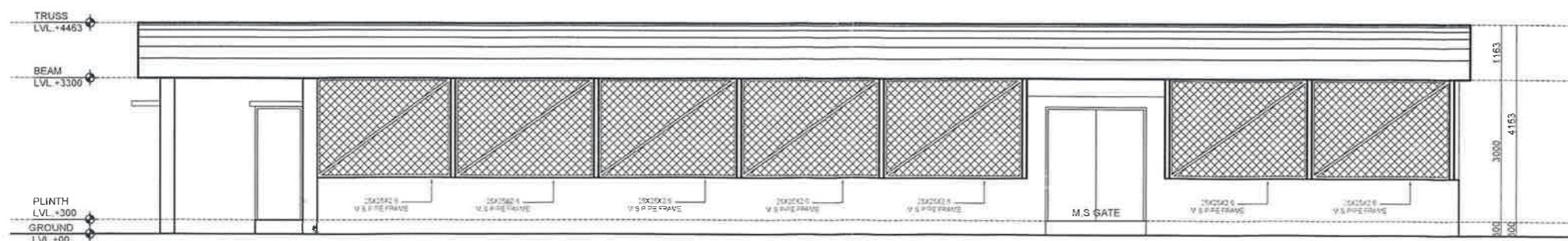
4.5 M WIDE ROAD

S. NO.	ITEMS	NO.	L.	B.	H.	QTY.	Unit
1	Earth work in excavation					0.00	
						Total	0.00 Cum
2	Preparation and consolidation of sub grade						
	Road surface	1	10.00	4.500		45.00	
						Total	45.00 Sqm
3	Construction of granular sub-base						
	under road	1	10.00	4.500	0.100	4.50	
						Total	4.50 Cum
4	Providing and laying C.C. pavement of mix M-25 with ready mixed concrete from batching plant.						
		1	10.00	4.500	0.150	6.75	
						Total	6.75 Cum

S. S. S.
Resident Engineer (Tech.)
C. & D. S., U.P. Jal Nigam
Lucknow



PLAN



ELEVATION

PROJECT	AGENCY -	NOTES -	ASST. ENGG. -	EXECUTIVE ENGG. -	DATE	NORTH -	ARCHITECTURAL CONSULTANTS -
PROPOSED PLAN & ELEVATION FOR SLRM CENTRE	CONSTRUCTION & DESIGN SERVICES U.P. JAL NIGAM	1. ALL DIMENSIONS ARE IN MM. 2. WRITTEN DIMENSION IS TO BE FOLLOWED, DRAWING NOT BE SCALED. 3. THIS DRG. IS THE PROPERTY OF M/S VISION ARCHITECTS ARCHITECTS & INTERIOR DESIGNERS. THIS DRAWING IS NOT TO BE REPRODUCED OR COPIED BEFORE THE PRIOR PERMISSION OF THE ARCHITECT. 4. ANY DISCREPANCY IN THE DRAWING IS TO BE BROUGHT TO THE NOTICE OF THE ARCHITECT BEFORE EXECUTION.			JUNE 2019		VISION
DRG. TITLE -	BUILDING -		JUNIOR ENGG. -	DEALT BY	ARCHITECT -	DRG. NO.	ARCHITECTS & INTERIOR DESIGNERS
PLAN, ELEVATION	SLRM CENTRE			Ar. Shashank	RANJAN SHUKLA	01/01	4/534, VIVEK KHAND, GOMTI NAGAR LUCKNOW. PH:- 0522-2398266. Email: visionarchitects1ko@gmail.com

प्रतिनिधि/अभियंता
को एका ही दस्तावेज में दिनांक
लक्षित

Resident Engineer (Tech.)
C & D. S., U.P. Jal Nigam
Lucknow

